

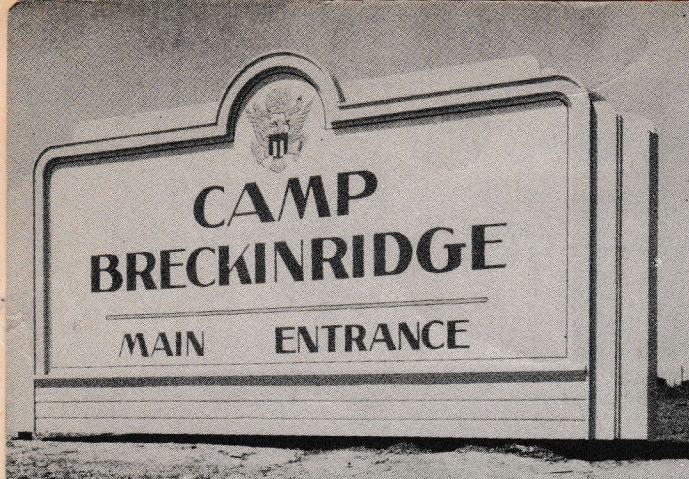


CAMP
BRECKINRIDGE
KENTUCKY

A camera trip through **CAMP BRECKINRIDGE**



PICTURE ALBUM OF THE CAMP AND ITS ACTIVITIES



HISTORY OF CAMP BRECKINRIDGE

CAMP BRECKINRIDGE is situated in the extreme western part of Kentucky, 12 miles from the Ohio River. This entirely modern Army camp—designed primarily for Infantry training—covers 56 square miles of gently rolling, brown clay terrain formerly devoted to agricultural pursuits.

The speed with which Camp Breckinridge sprang into existence in 1942 stands as a tribute to Army and civilian engineers. Plans for the camp were outlined at Washington, D.C., in August of 1941. Actual construction began April 1 of the following year. An around-the-clock work schedule was maintained during the early months and within five and one-half months all prime contracts had been filled.

On July 1, 1942, the camp was activated and the first cadremen established headquarters in the brick schoolhouse of Boxville, Ky., a community taken over by the government as part of the military reservation. Shortly thereafter headquarters was relocated in new administrative buildings.

First of the hundreds of cream-colored frame structures to dot the Kentucky countryside marking the arrival of the new Army camp were hospital facilities, barracks, mess halls, warehouses and office buildings, to be followed by

chapels, service clubs, theaters, recreation halls and post exchanges. There are 14 post exchanges (general stores for soldiers), 10 non-denominational chapels, five theatres, three Service Clubs, three guest houses and a field house or gymnasium large enough to enable the playing of three basketball games simultaneously.

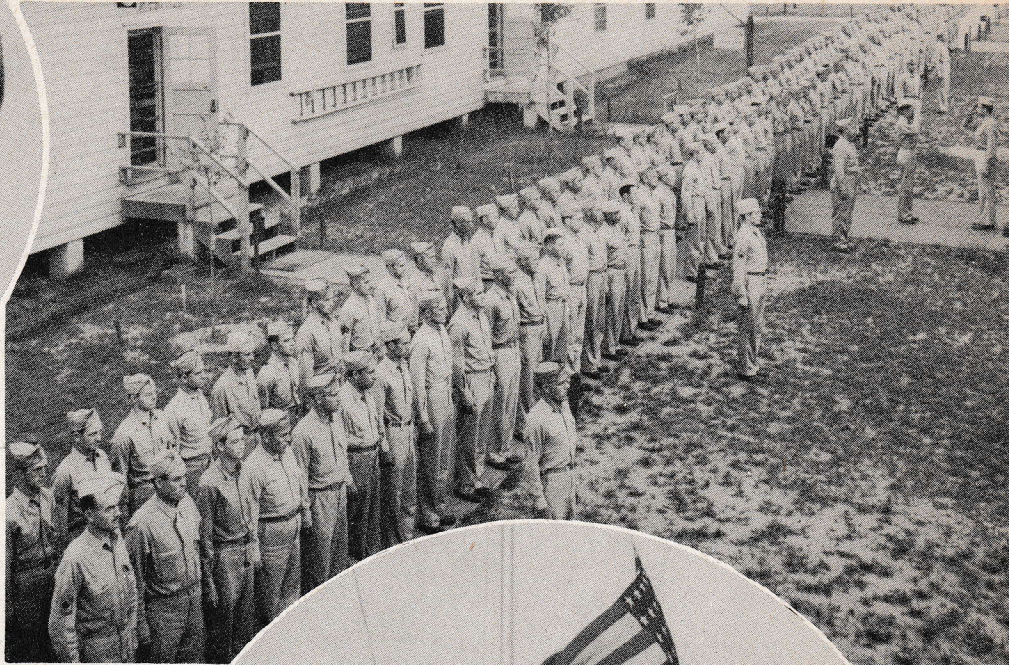
In reality the camp is very similar to a large city. It includes a spacious hospital, laundry, incinerator, cold storage plant, motor repair shops, sewage disposal plant, five fire stations, all utilities, paved roads and sidewalks, together with other facilities.

Camp Breckinridge was named in honor of John Cabell Breckinridge, one of Kentucky's outstanding statesmen of the 19th century. At 35 he was the youngest vice-president in history of United States, presiding over the Senate with conspicuous impartiality. Ironically, a few years later he was caught in the Civil War turmoil and eventually distinguished himself as a Confederate general.

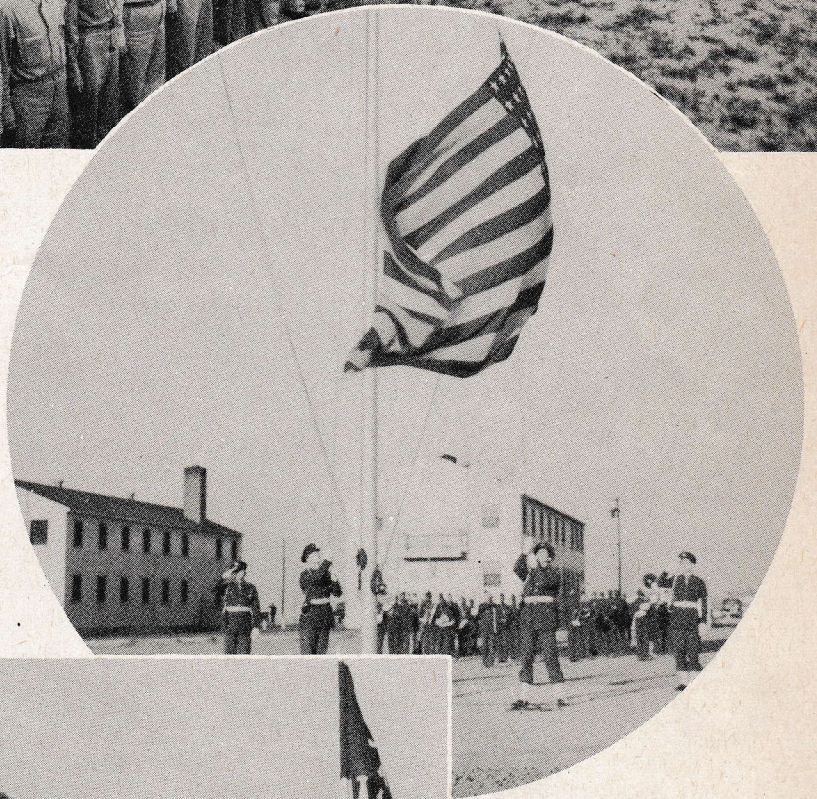
Nearest town to Camp Breckinridge is Morganfield, Ky., three miles distant. Henderson, Ky., and Evansville, Ind., 24 and 33 miles away respectively, are the closest large cities.



"GOTTA GET UP!"



REVEILLE . . .
the Army day begins



ON THE MARCH



RETREAT . . .
a tribute to "Old
Glory" at the close
of day

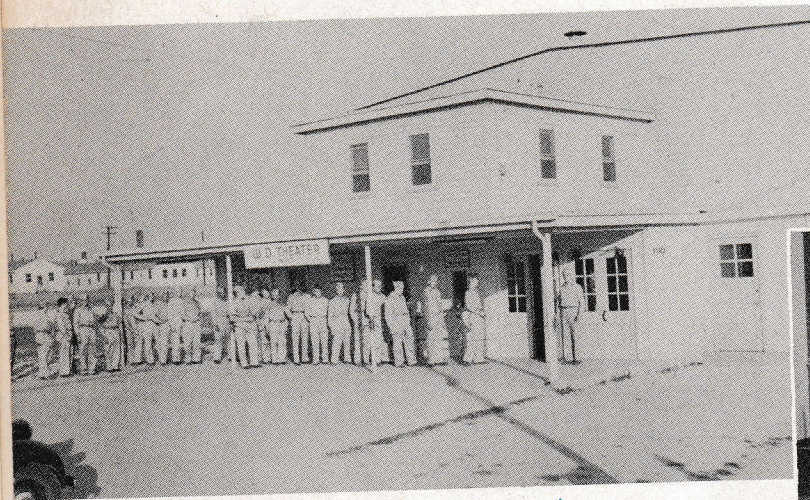


▼ OFFICERS' CLUB

SERVICE CLUB TWO ▲

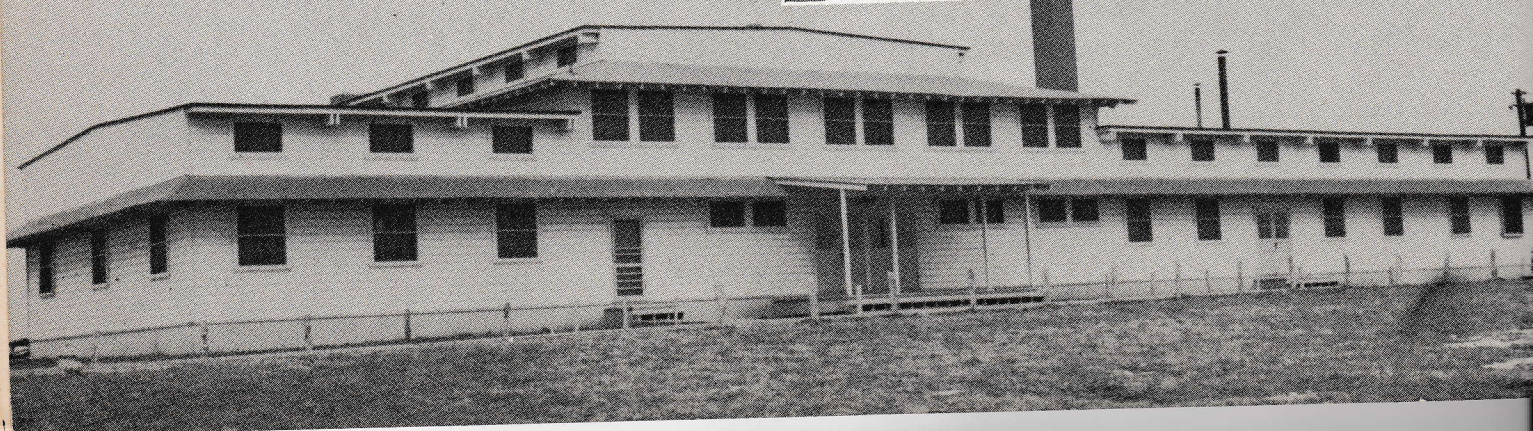
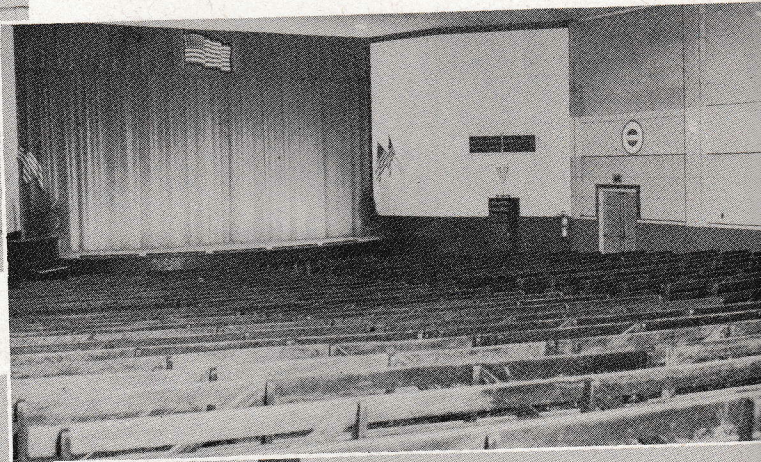


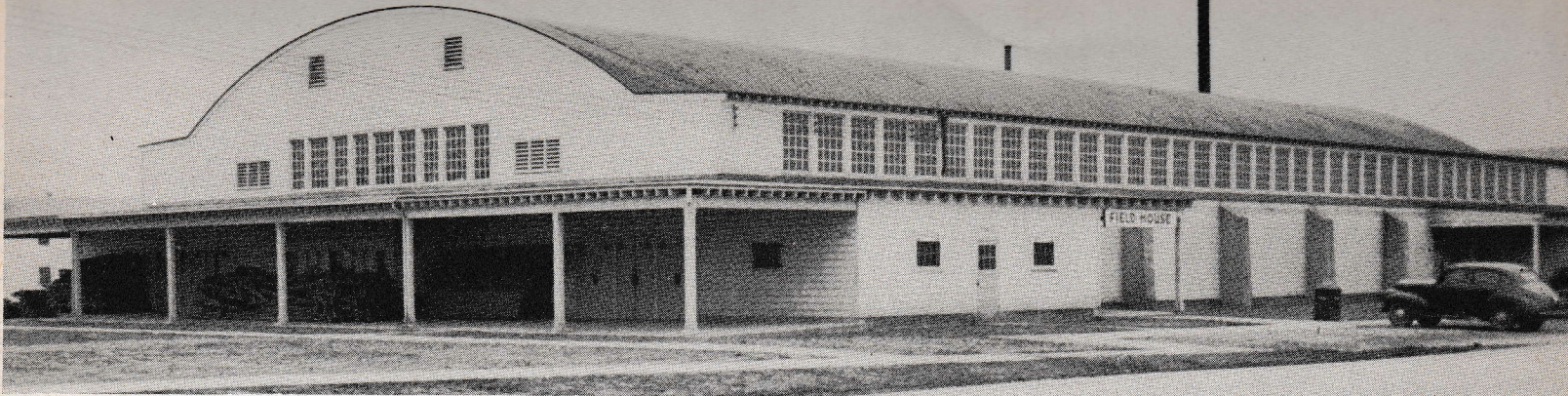
BUILDINGS



THEATRE NUMBER FIVE ▲
NON-COMMISSIONED OFFICERS' CLUB ▼

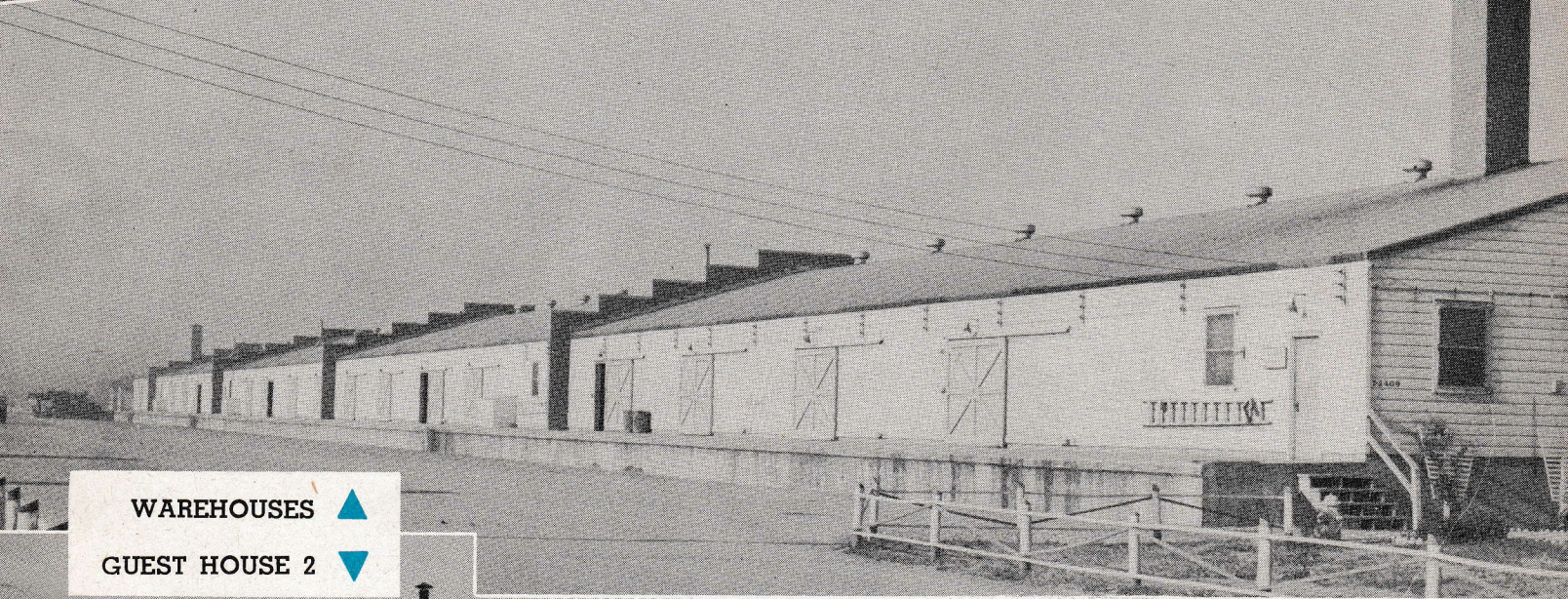
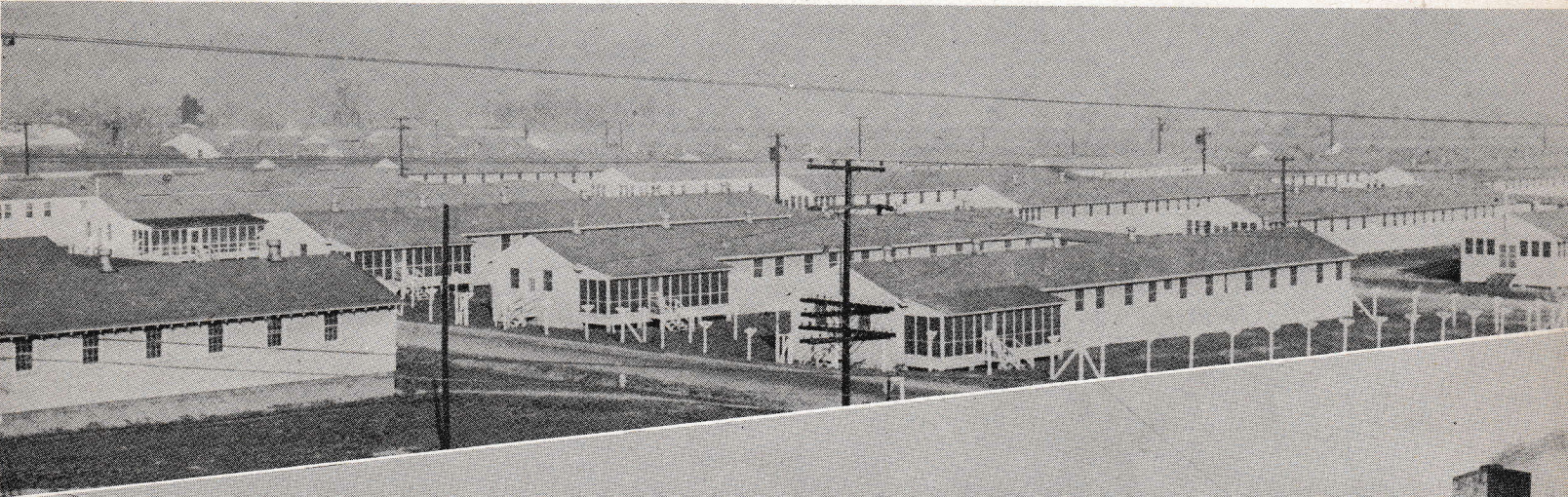
THEATRE INTERIOR ▼





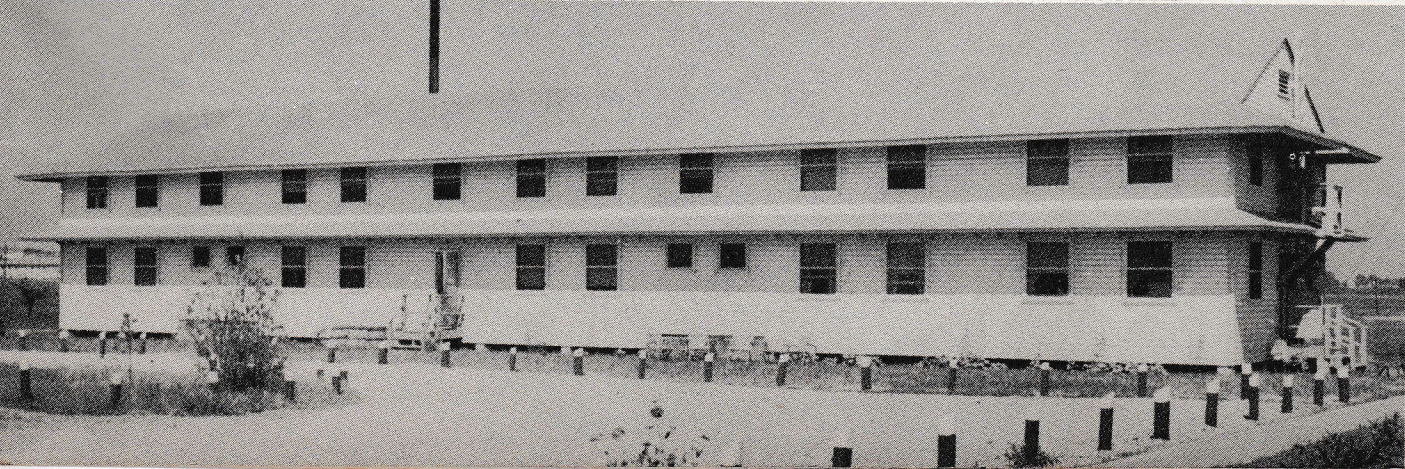
▲ FIELD HOUSE

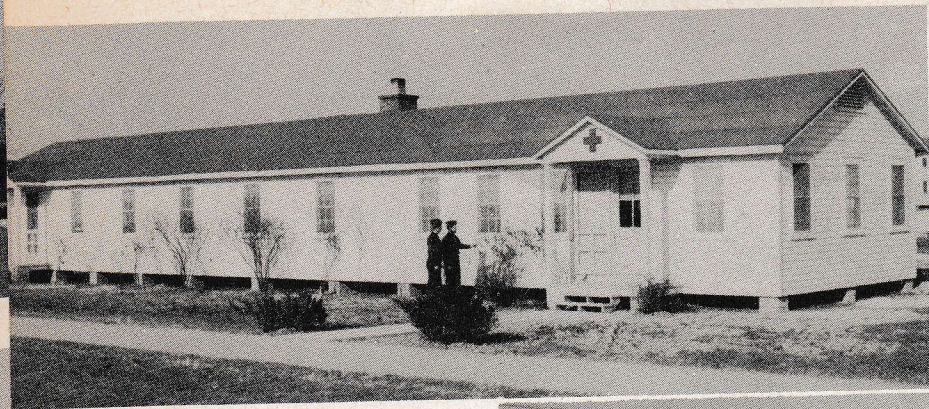
POST HOSPITAL AREA ▼



WAREHOUSES ▲

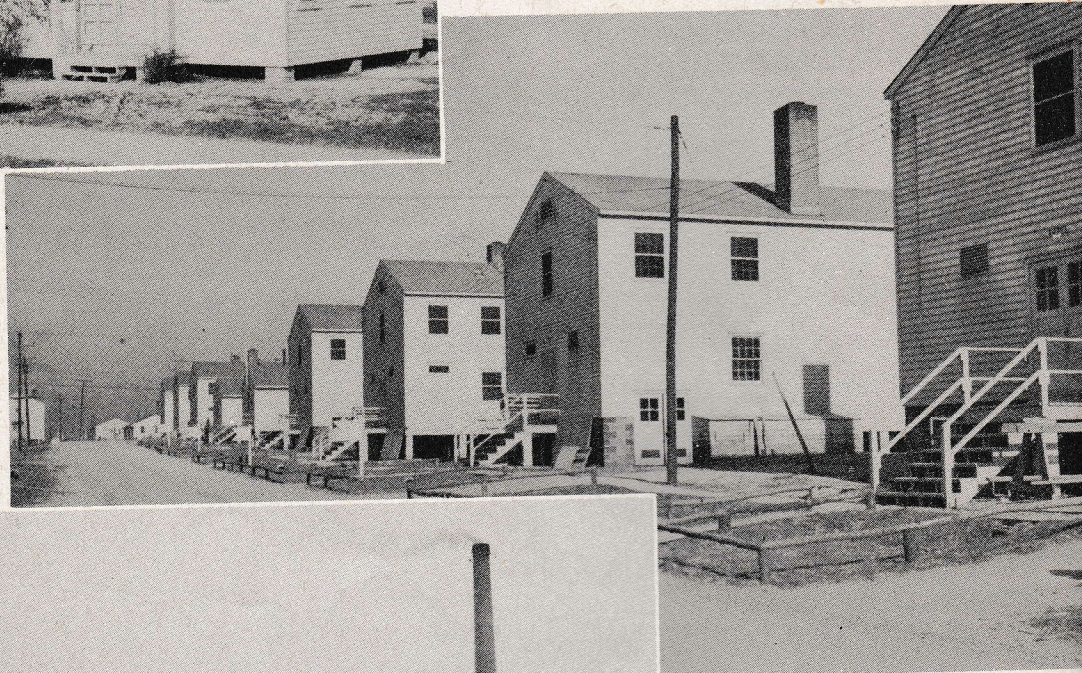
GUEST HOUSE 2 ▼





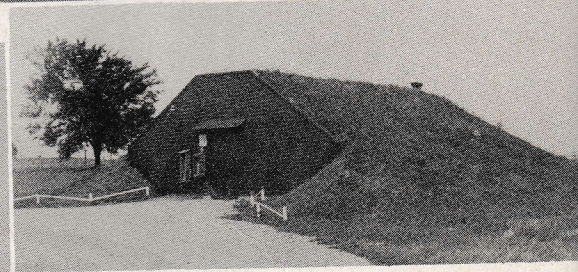
◀ RED CROSS BUILDING

BARRACKS ON
A COMPANY
STREET ▶



◀ LAUNDRY

AMMUNITION
"IGLOO" ▶



◀ SENTRY POST . . .
or "pill box" with part
of stockade in back-
ground



SQUAD ROOM ▲

COMPANY AREA... "home"

▼ GAME AROUND A FOOT LOCKER

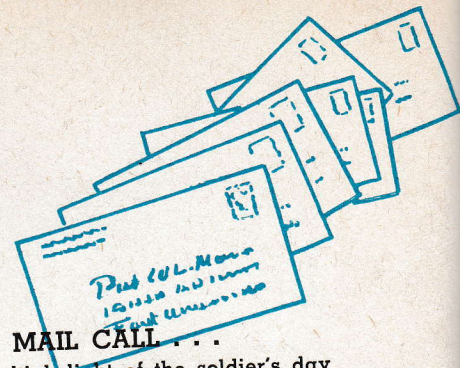


▲
BARRACKS
BARITONES

DAYROOM . . .

Where soldiers can relax and
visitors can meet son, brother
and sweetheart in service ▼





MAIL CALL . . .
 high light of the soldier's day
 is a letter from home

**FRIDAY NIGHT
 "HOUSECLEANING"**



**"A SOLDIER'S
 RIFLE IS HIS
 BEST FRIEND"**

COMPANY AREAS are beautiful when
soldiers turn landscapers . . .



WISHES
WON'T
WASH
DISHES



K.P.

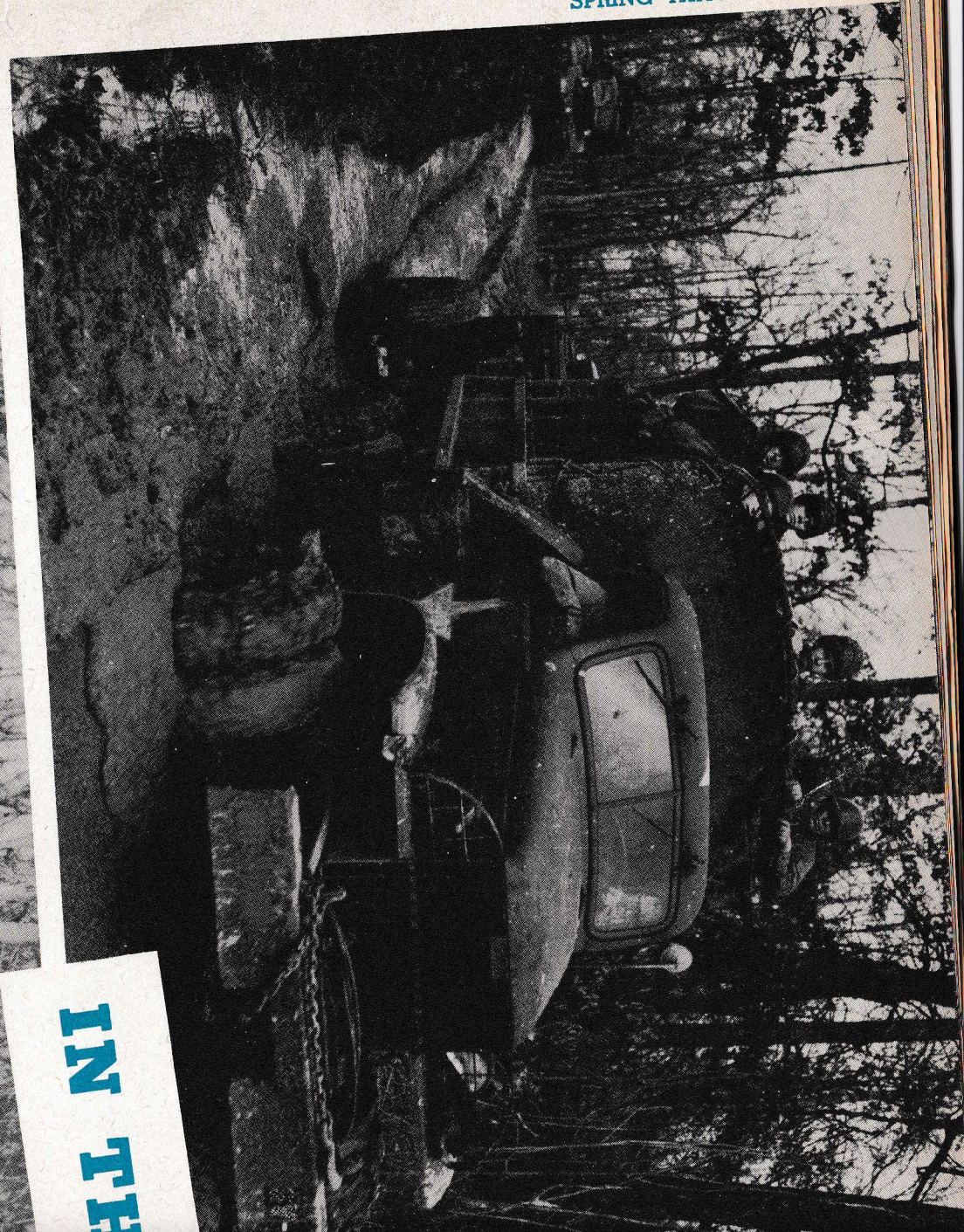


STOWING IT AWAY

CHOW LINE . . . in front of a field kitchen

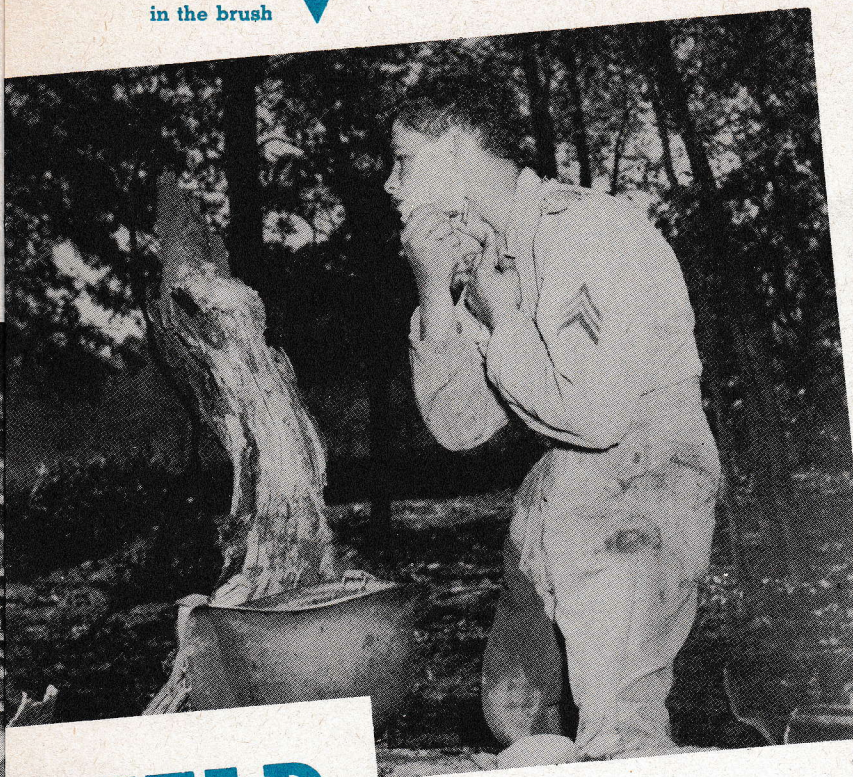


SPRING THAW



IN THE

BRISTLES
in the brush ▼



FIELD

BRIDGE BUILDERS
... the engineers ▲



TENTING TONIGHT ... ►



◀ INSPECTION!



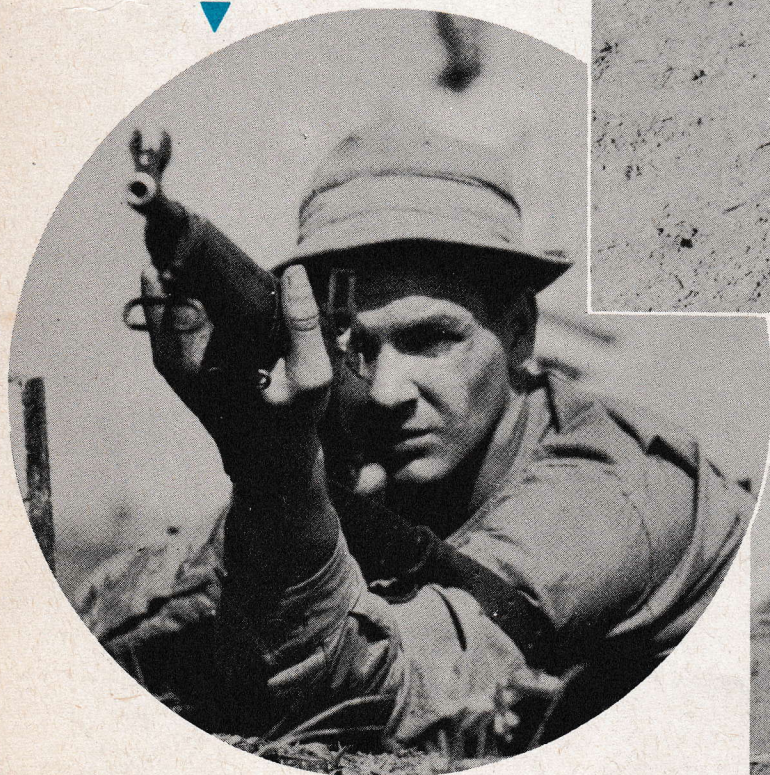
“BULL’S EYE” . . .

say scorekeepers in the pit as they indicate where rifle slug penetrated . . .

FIRING LINE . . . on the rifle range



DRAWING A BEAD



PISTOL PRACTICE

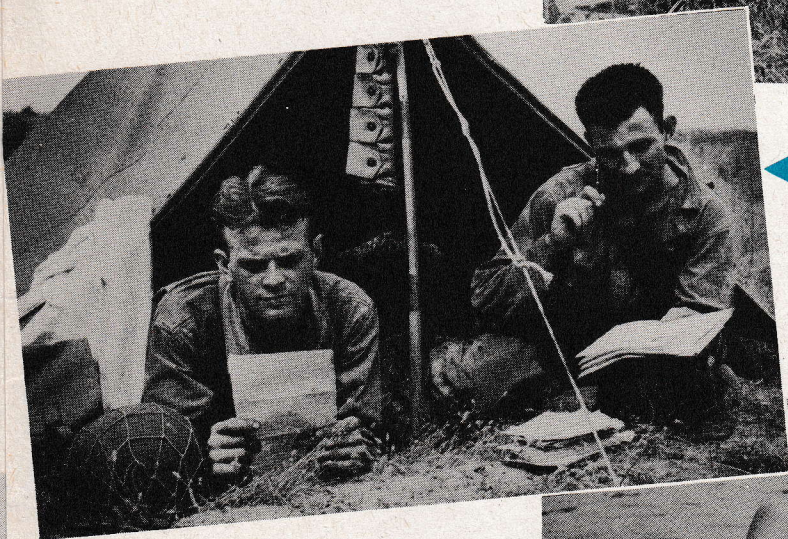
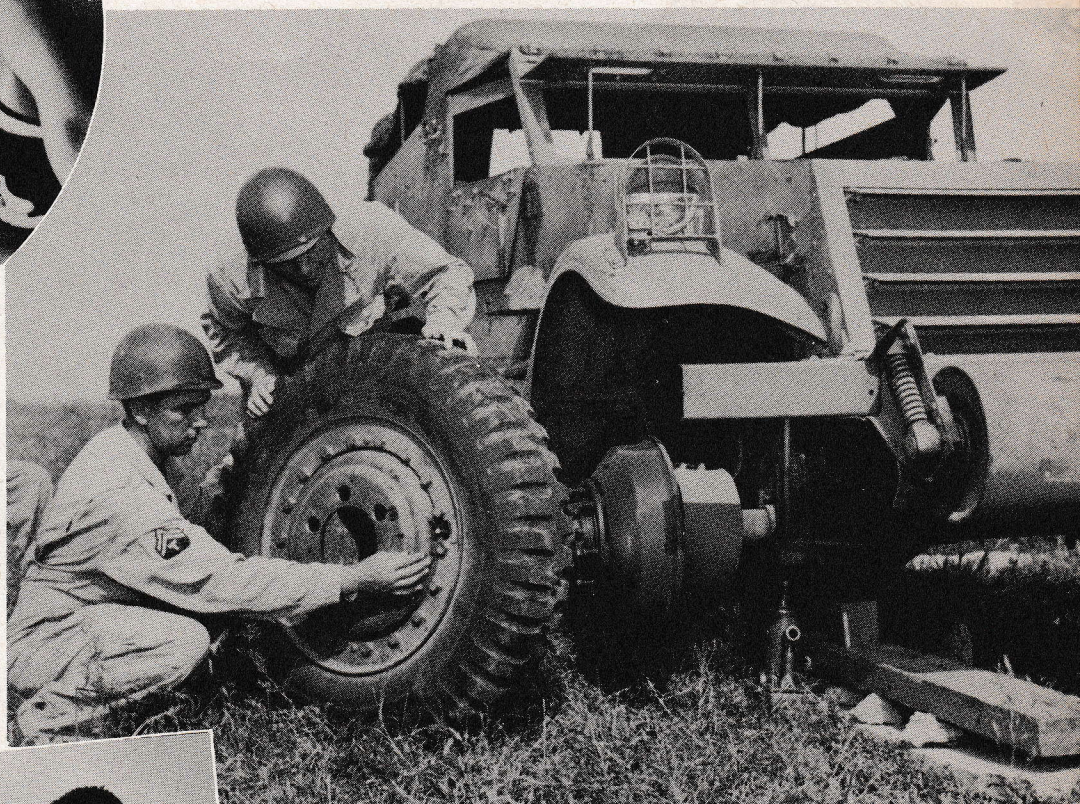




▲ **SOLDIER WELDER**

HALF-TRACK

gets quick tire repair on field problem

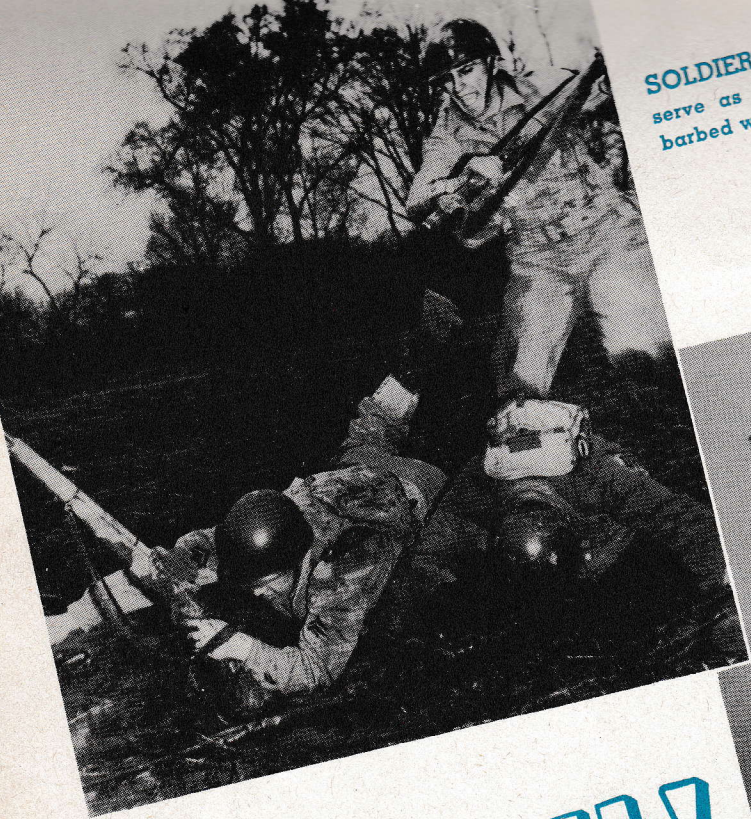


◀ **TIME OUT . . .**
from soldiering
to write home

▶ **G. I. TROUSERS . . .**
make good
pontoons for
improvised
water raft



SOLDIERS' BODIES . . .
serve as bridge for spanning
barbed wire hazard . . .

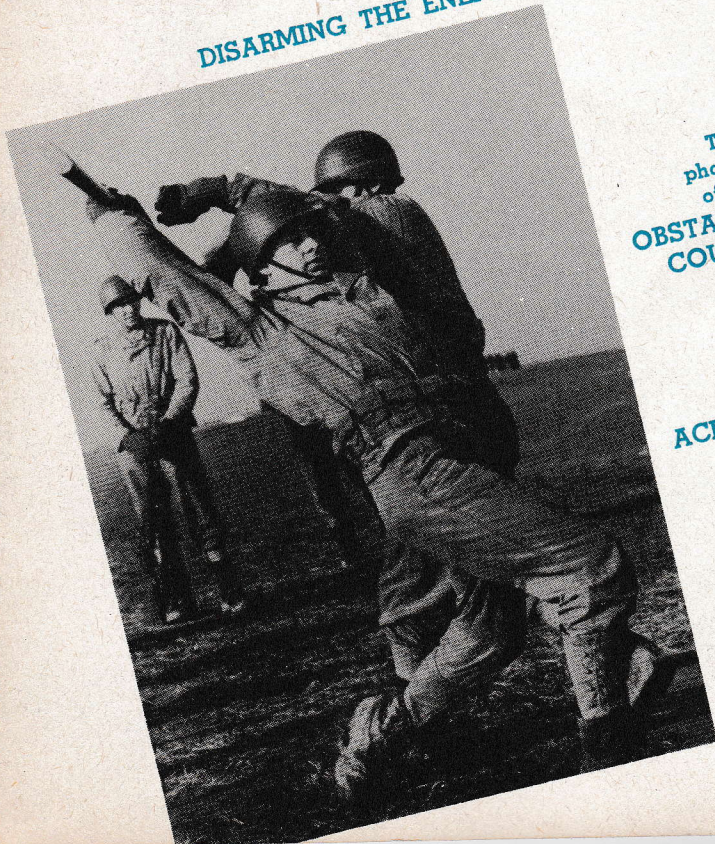


THE BAYONET THRUST . . . is stressed in combat training

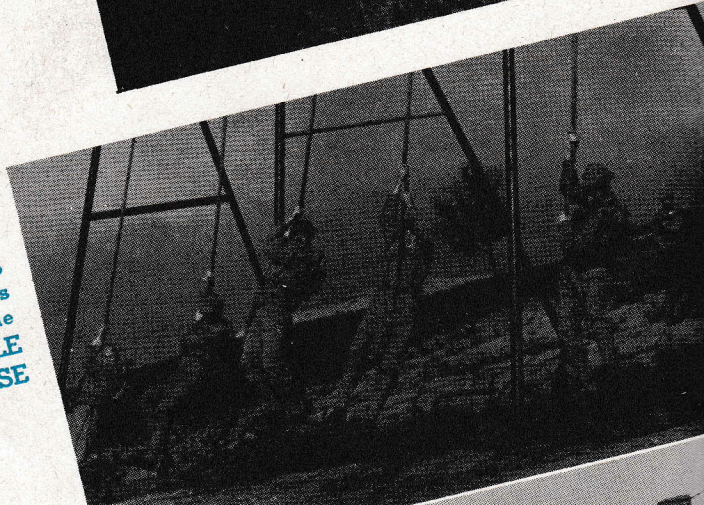


GET TOUGH!

DISARMING THE ENEMY



Two
phases
of the
OBSTACLE
COURSE



ACROSS . . .

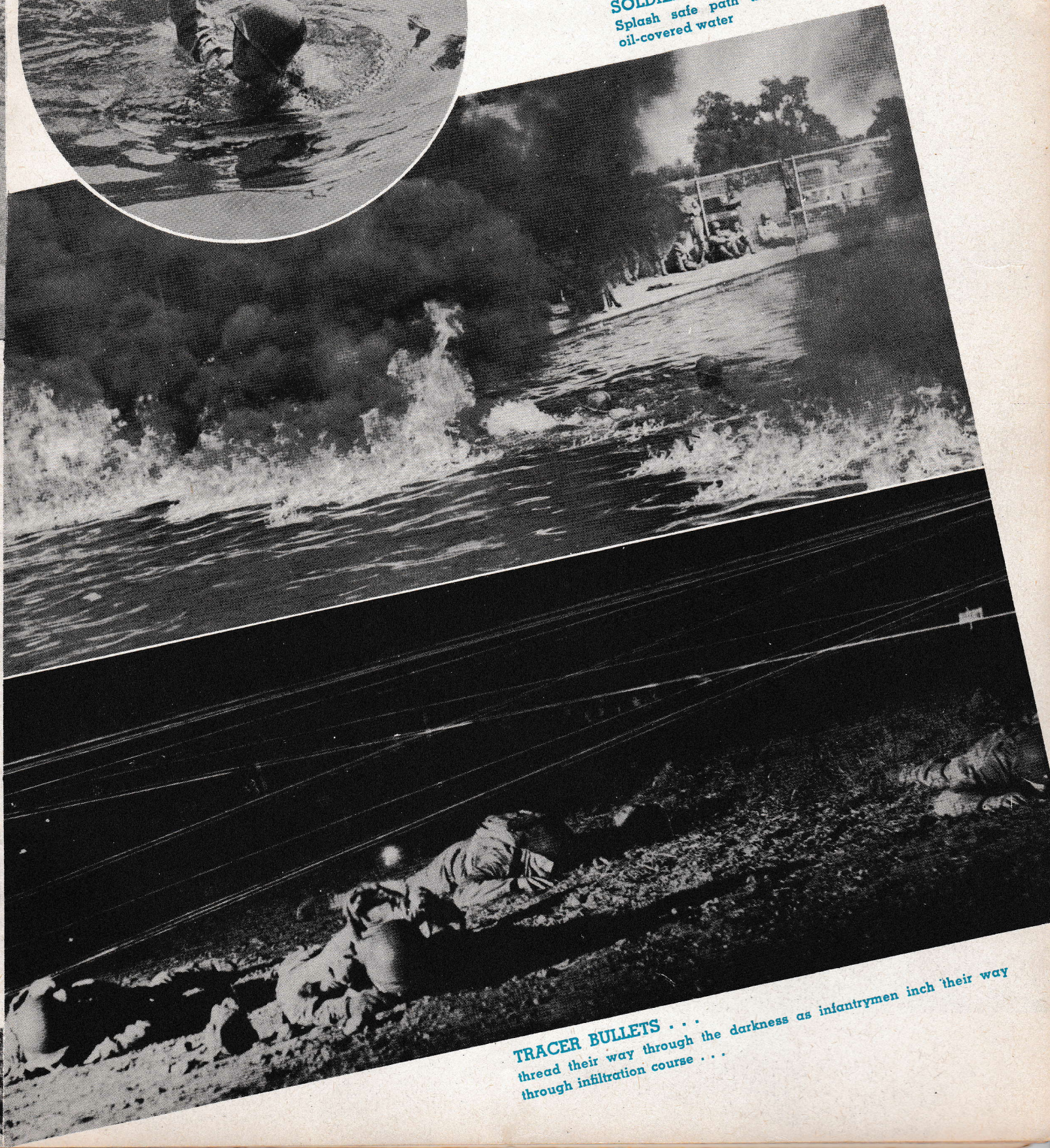
OVER
AND
UNDER





SWIMMING
with rifle
protected

SOLDIERS . . .
Splash safe path through blazing
oil-covered water



TRACER BULLETS . . .
thread their way through the darkness as infantrymen inch their way
through infiltration course . . .



CAMOUFLAGE

is an art



CONCEALED
DEATH

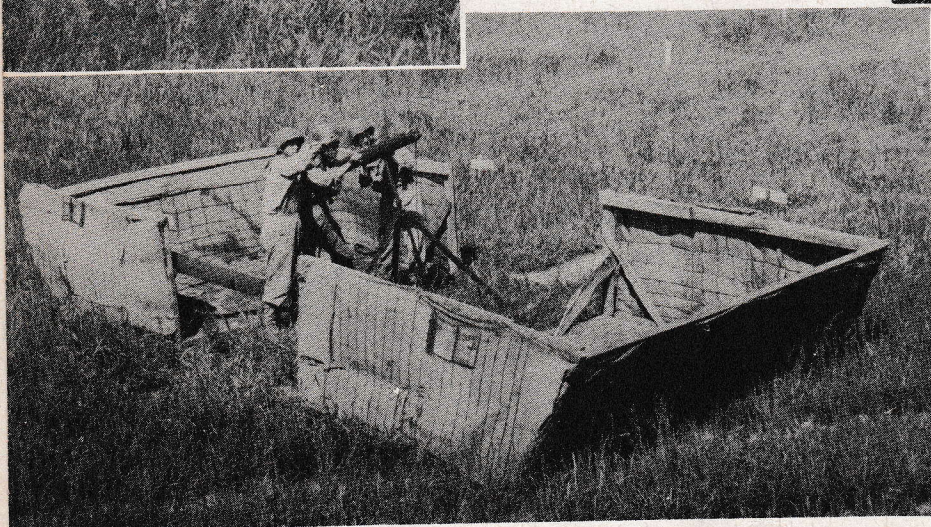


SHACK
ATTRACTS
enemy planes

COLLAPSED
the hut proves
itself an anti-
aircraft installation



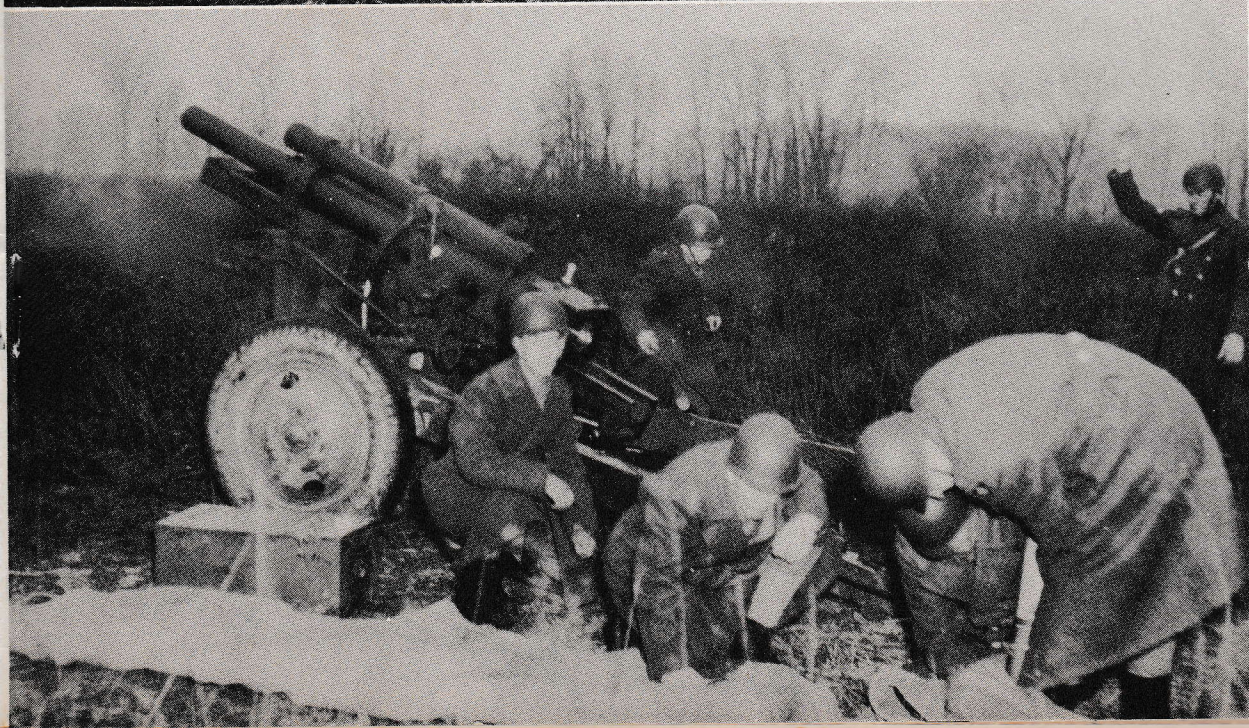
EVADING "ENEMY" PATROL





FRONT
LINE
BALLET

ATTACK!



▲
FOLLOW
THE
TANKS

▲
ARTILLERY
BARRAGE
BEGINS

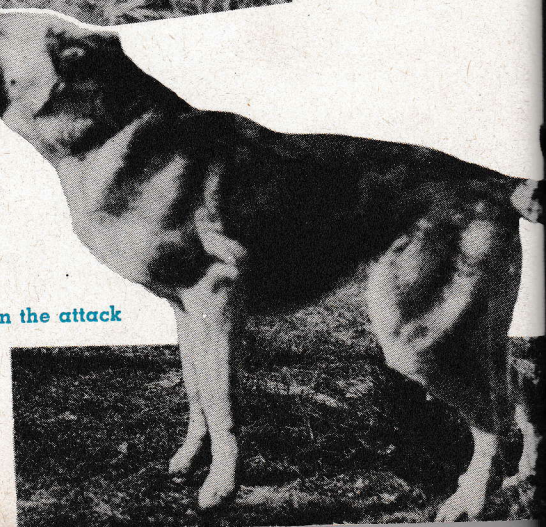
**BOMBS
BURST**
in stream
as troops
employ rope
bridge
during
attack



**FLAME
THROWER . . .**
a devastating
weapon



WAR DOGS (WAGS) . . . help in the attack



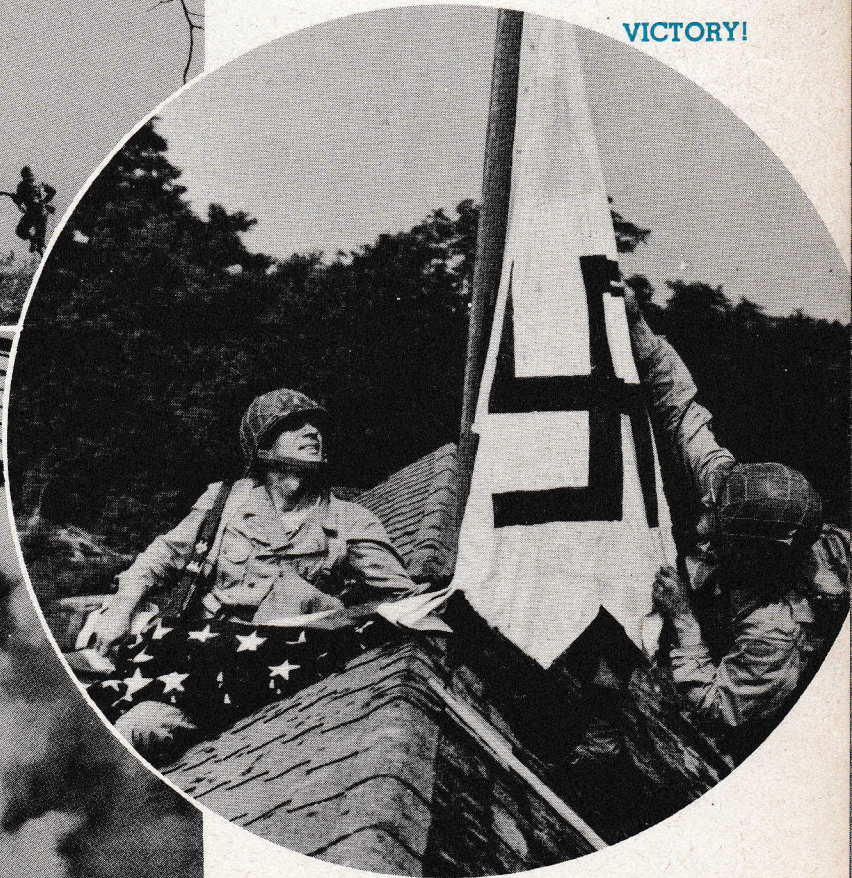
"NAZI
VILLAGE"



CHARGE!



VICTORY!



"OPEN, SESAME!"



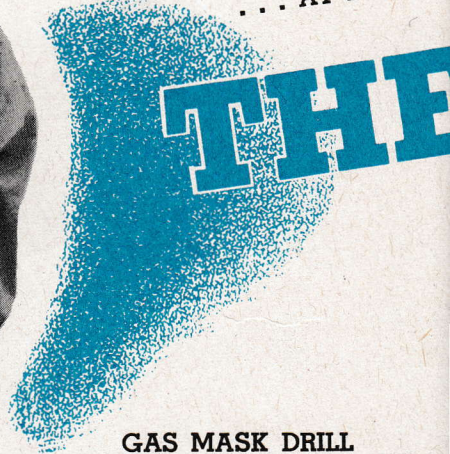


AT WORK . . .

EXPEDITING MAIL . . . in Post locator



. . . AT PLAY



GAS MASK DRILL





TIME OUT FOR
RELAXATION . . .
Scene in Section 1
Dayroom

IN CADENCE . . .

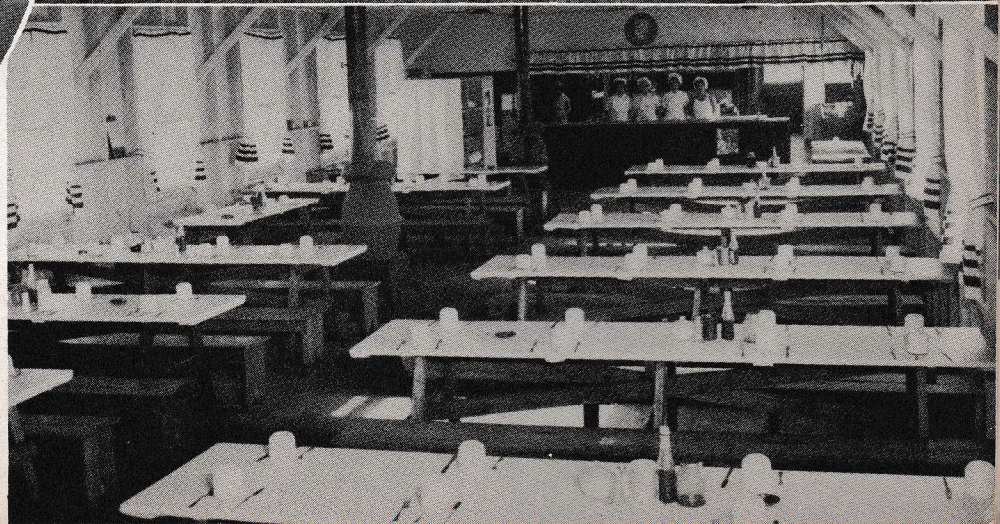
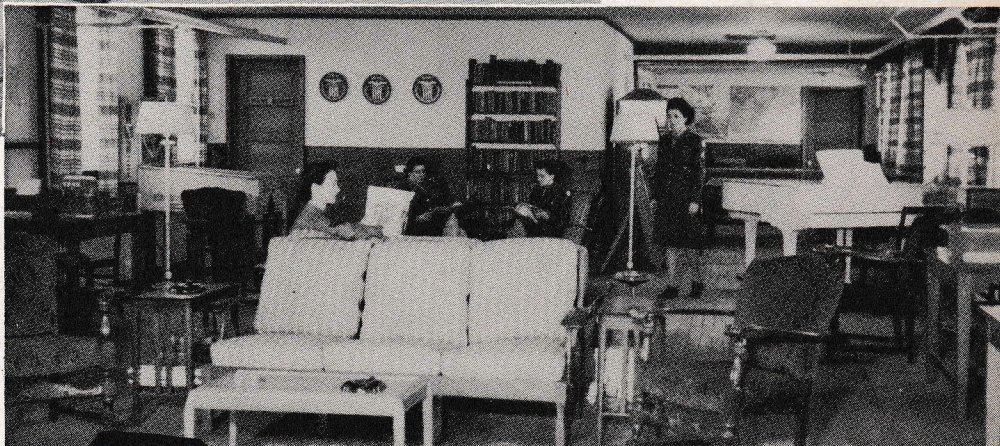
WAC

S-T-R-I-K-E!
Softball is a favorite
recreation among the
WAC

**WAC
DRIVER**



SPIC'S THE WORD . . .
for WAC mess hall

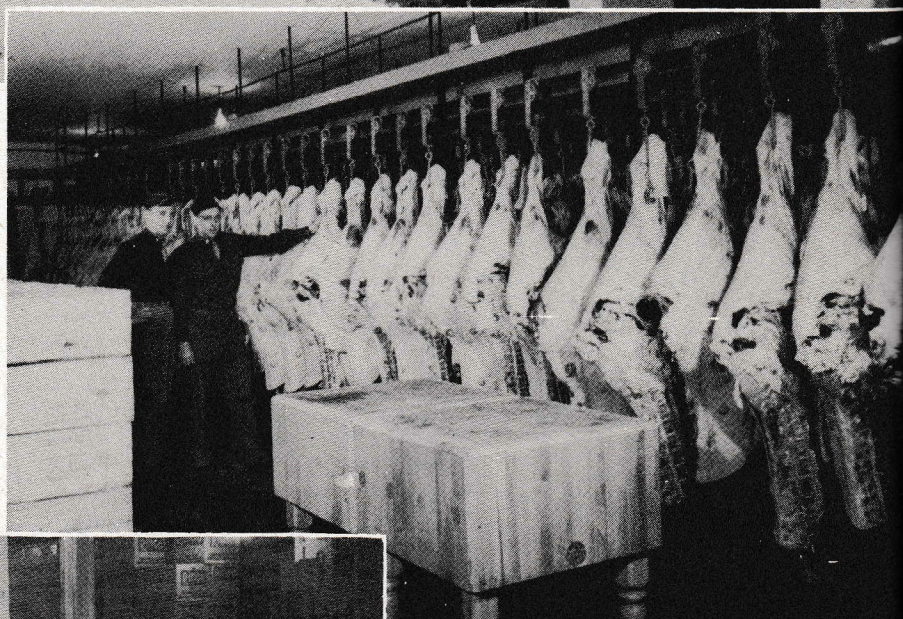


SUPPLY



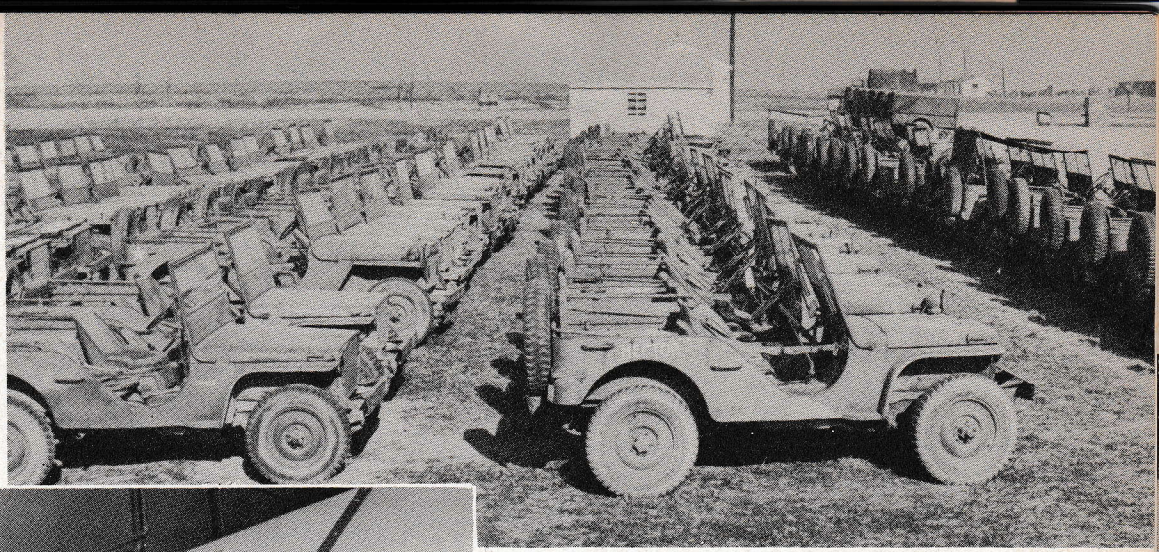
SUPPLIES ARRIVING
at one of the warehouses

COLD STORAGE ROOM
... fighting forces need
plenty of meat ...



COMMISSARY ...
The Post
Grocery Store

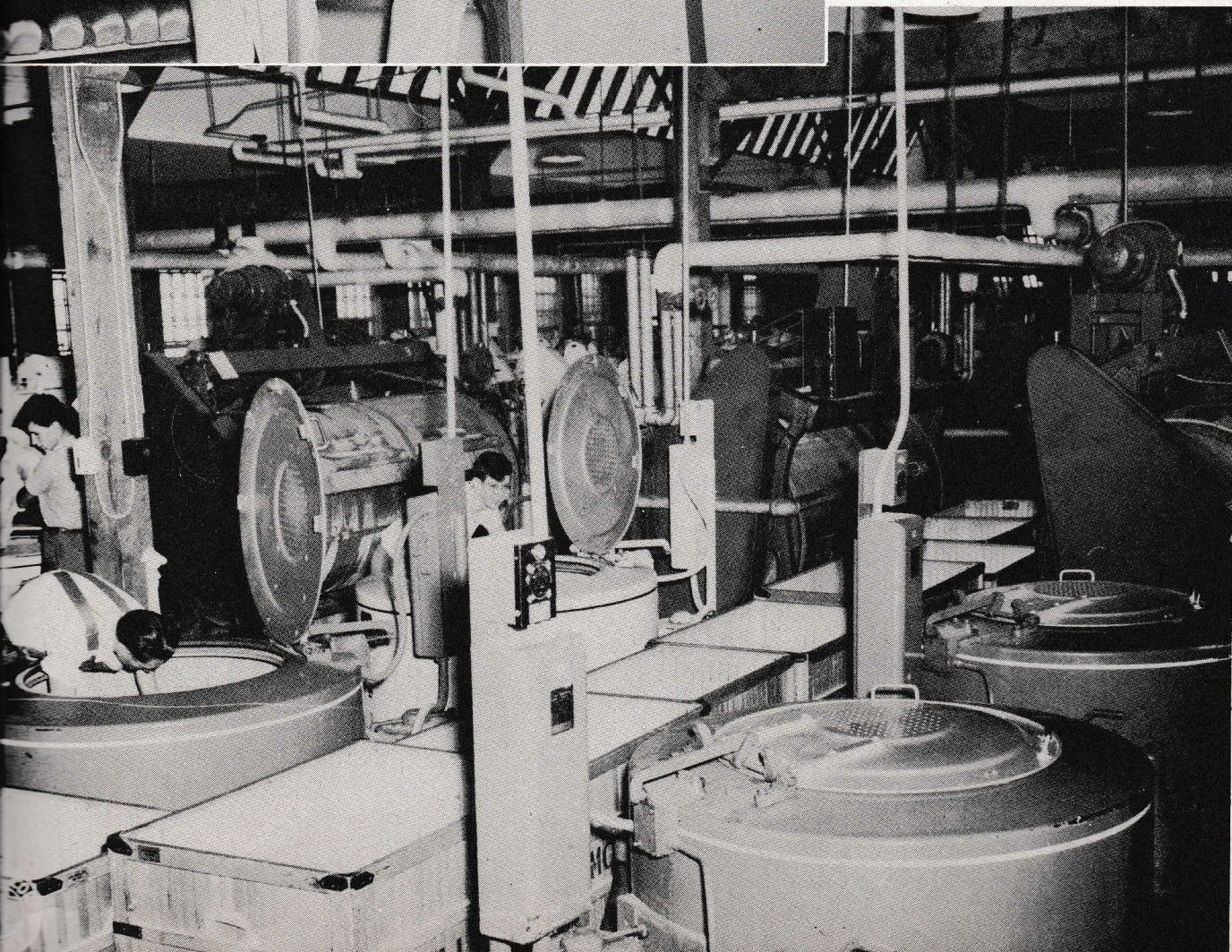
JEEPS . . .
at Motor Pool



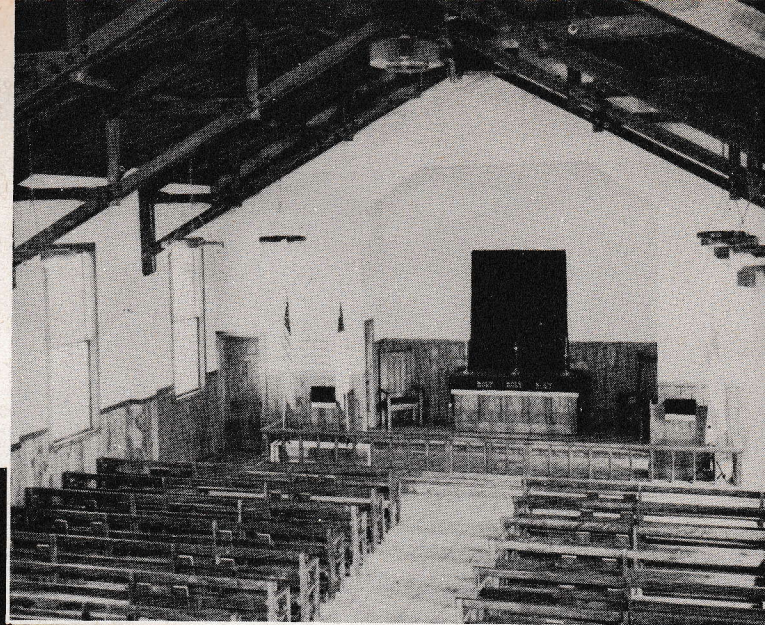
FRESH AND GOLDEN BROWN
at Post Bakery



THE LAUNDRY . . .



CHAPEL SCENES



▲ A PLACE OF WORSHIP . . .
For all creeds



◀ SOLDIERS . . .
Leaving one of the camp's 10 chapels
after evening service

▼ BRIDAL COUPLE
after chapel wedding



◀ WAC
CHOIR





SELECTING
GIFT
for a
loved one

A TYPICAL "PX" SCENE . . . at one of the 14 exchanges

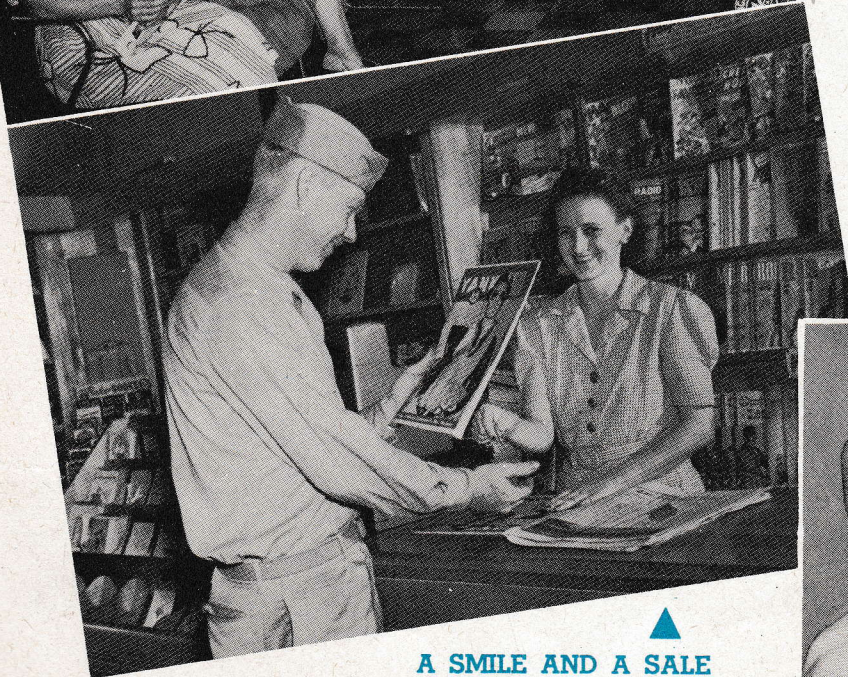


BEAUTY
SHOPPE . . .
for WACS, nurses
and civilian
workers of Post



POST EXCHANGES

KEEPING IN TRIM



A SMILE AND A SALE
at the magazine counter





◀ "JITTERBUGS"

POPCORN
on the hearth ▶

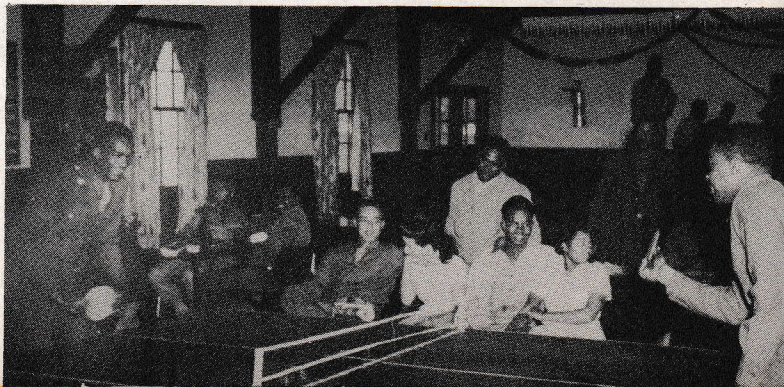
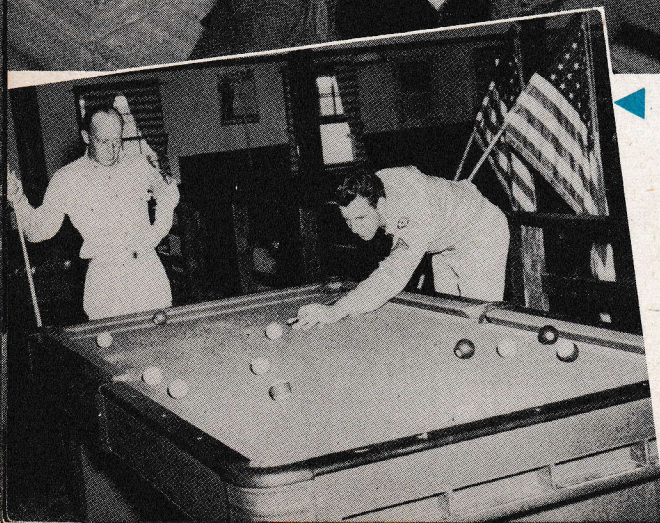


▶ "IN THE
GROOVE"

SERVICE

TABLE TENNIS
at the Negro
Service club ▶

▶ "NINE BALL . . . in the side pocket"





◀ BUSINESS IS ALWAYS "RUSHING"
at the soda fountain

THE DAY
BEFORE
PAYDAY ▶



▶ REFRESHMENT CENTER . . . the Club cafeteria

CLUBS

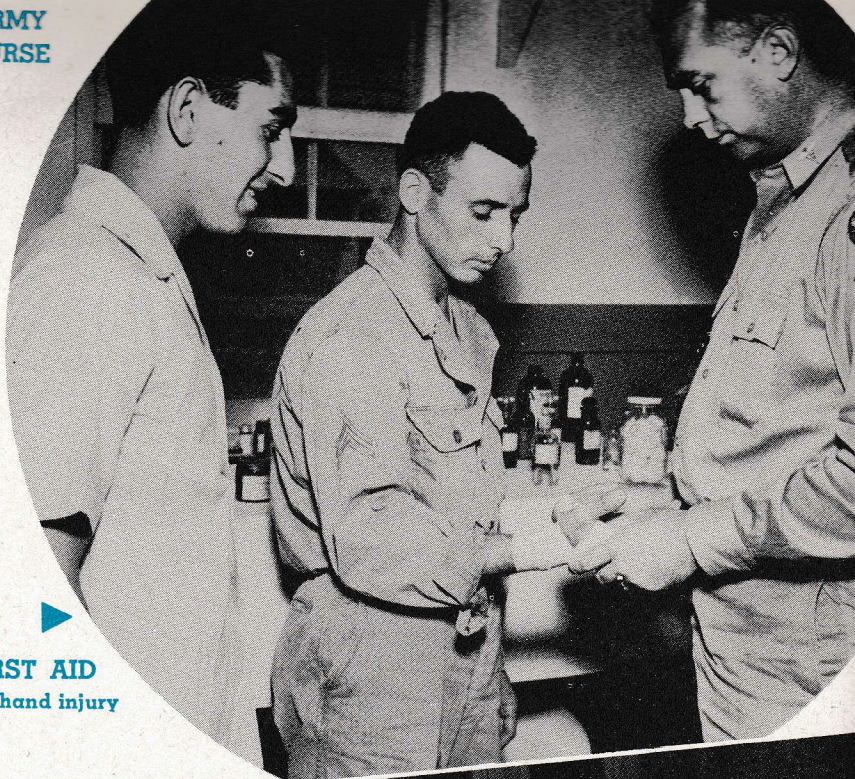
GRAND MARCH ▶
at Negro Service Club



◀ A BOOK FOR THE SERGEANT

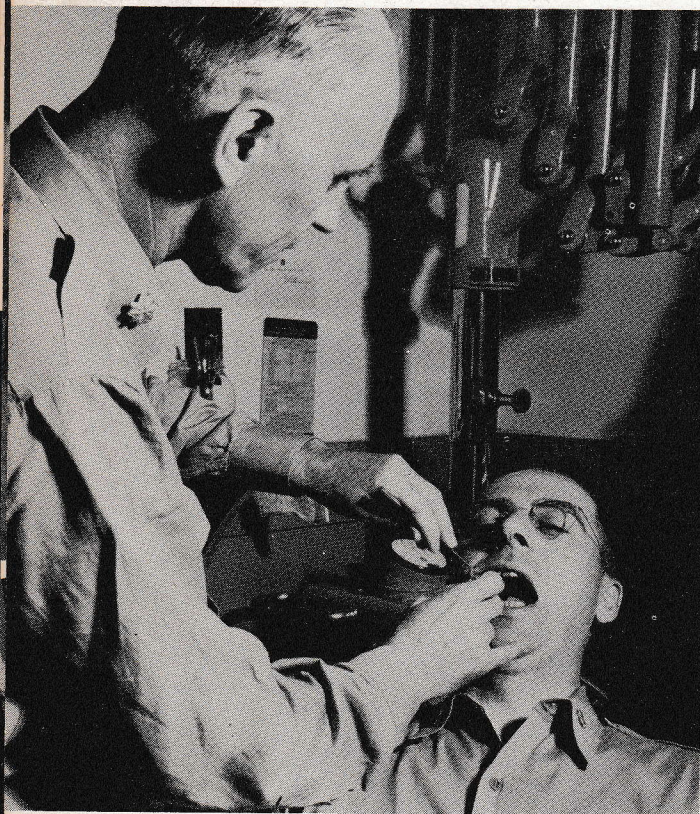


◀ ARMY
NURSE



▶ FIRST AID
for hand injury

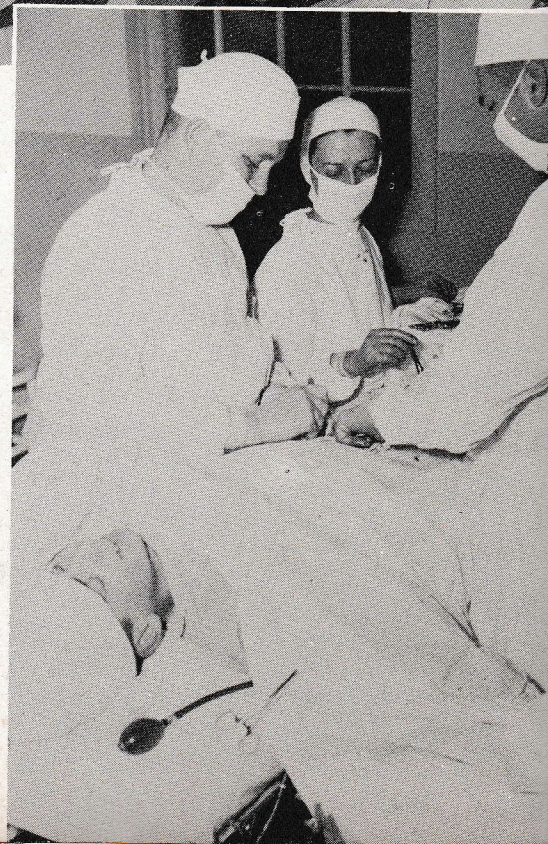
BEST OF CARE

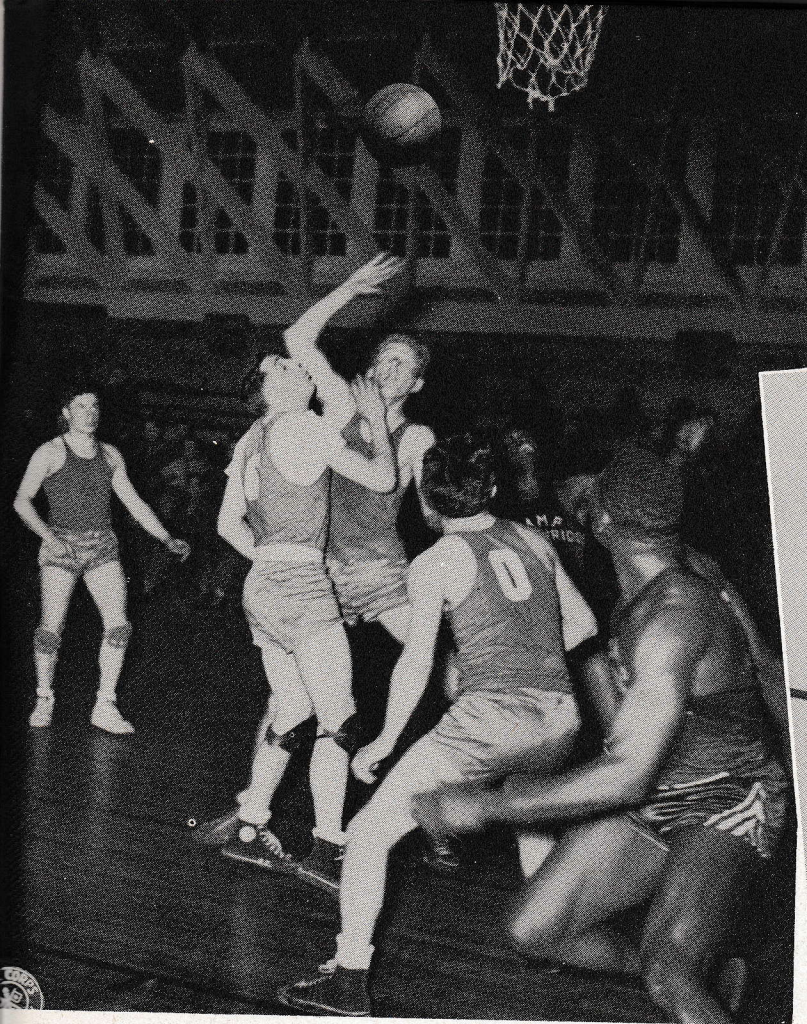


▶ NURSES'
REST
PERIOD

▶ DENTAL
HYGIENE

SURGERY ▶





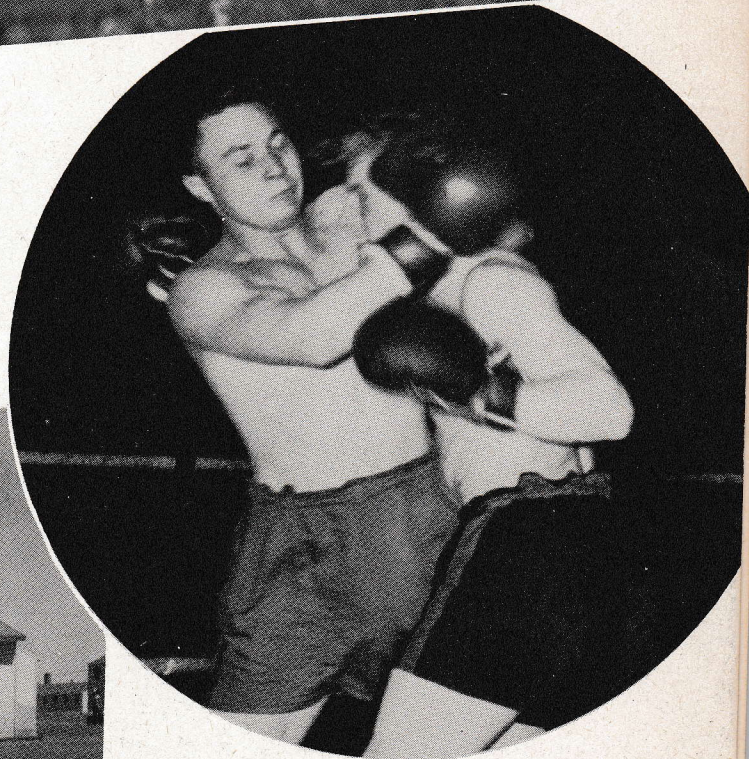
▲ TENSE MOMENT . . . in a cage session

SPORTS

▼ "OUT AT THE PLATE"



FIELD MEET



▲ SLUG FEST
at the field house

STANDING ROOM ONLY



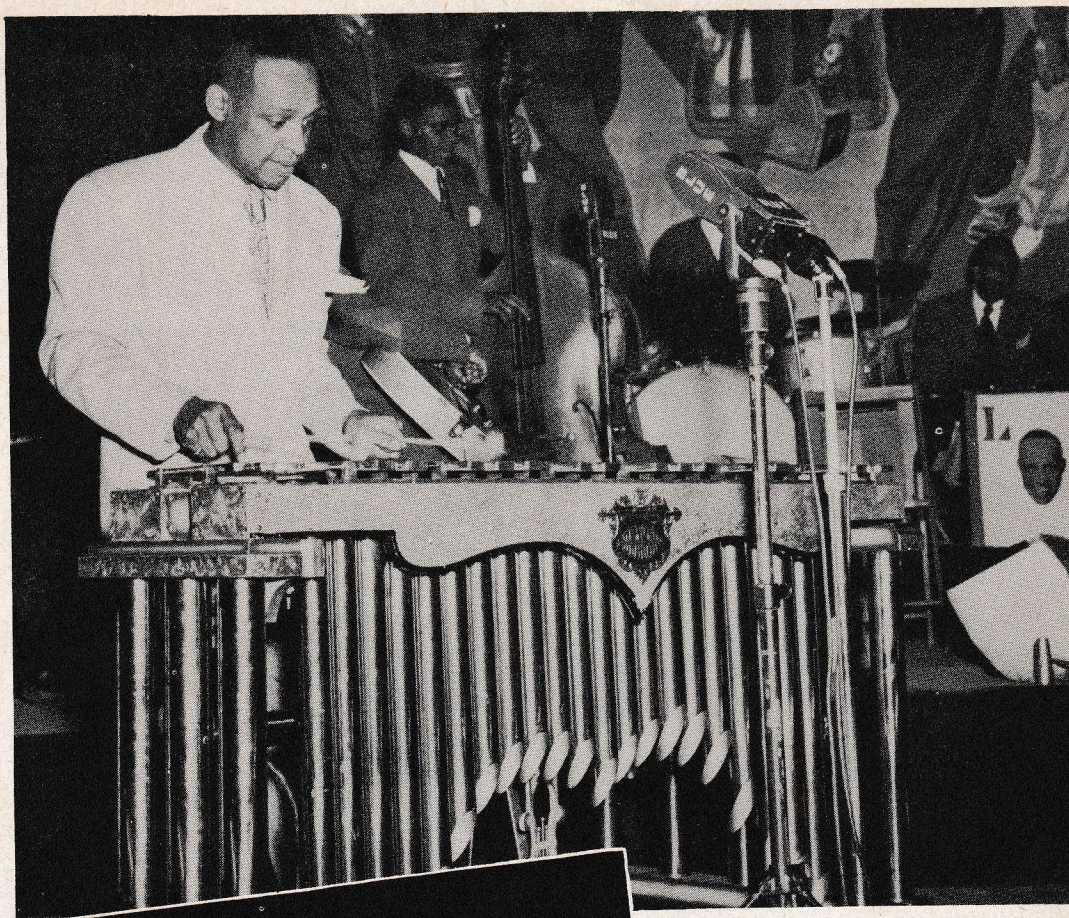
STAR
BILLING



CURTAIN CHORUS



★
 LIONEL
 HAMPTON
 takes the
 spotlight at camp
 entertainment



★
 ★
 ★
 ★
 ★
 ARMY SHOW
 goes on the air



▲
 "INTRO-DUC-ING . . .
 the world's heavyweight champion Joe Louis

"EMCEE" MICHAEL ROY
 gets G.I. assistance ▼

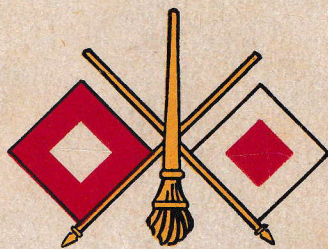




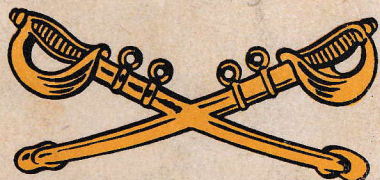
"UNTIL
WE MEET
AGAIN"



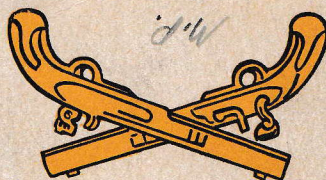
SIG
CORP



Cavalry



M.P.



V.C.



CORP



COASTAL



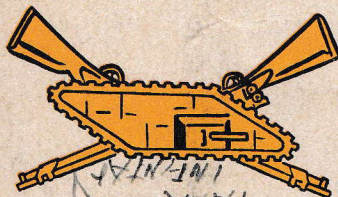
ARTILLERY



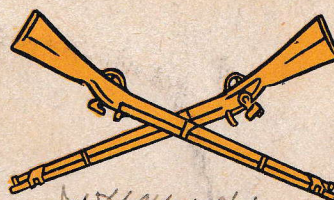
MEDICAL



TANK
INFANTRY



INFANTRY



ENGINEERS

